



Take the time to learn:

WATERCOLOR

Corrections
Backgrounds

CORRECTIONS

Tips

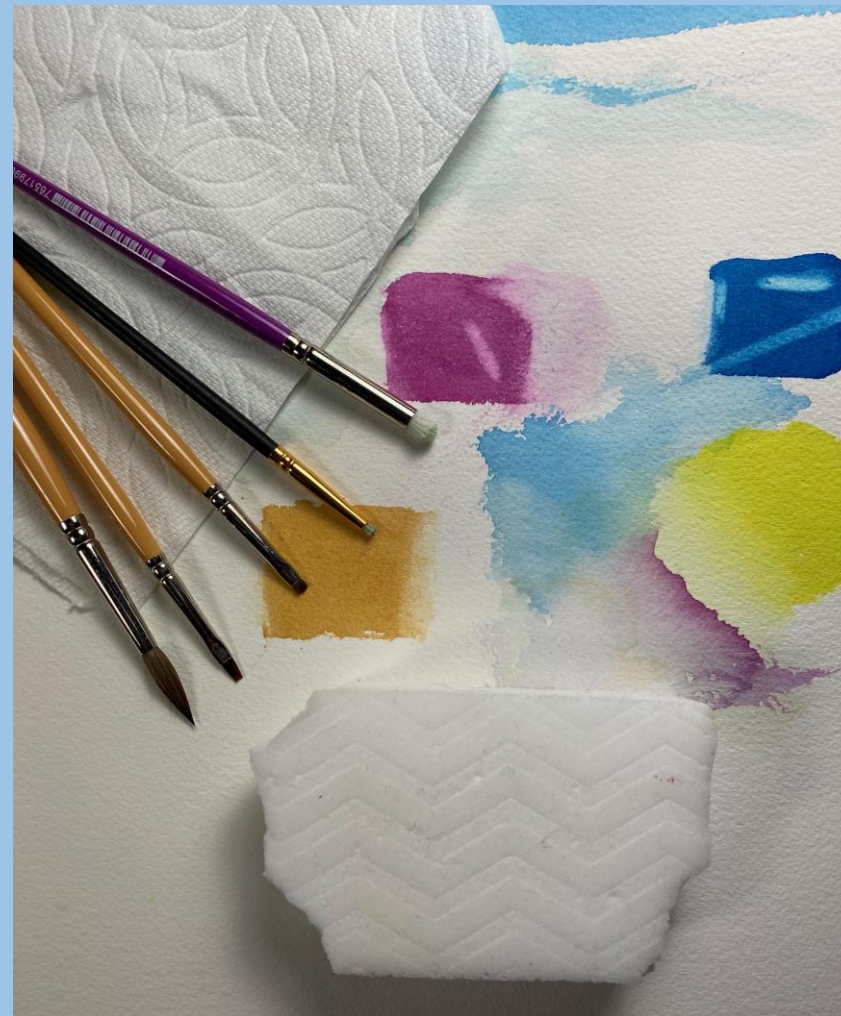
Use these methods if your painting is on good 100% cotton watercolor paper. Test on a scrap piece first.

Start with the least aggressive method working up to more aggressive methods. The softest brush graduating to stiffer brushes. Mr. Clean magic eraser with no detergent in it.

Wet only the area to be corrected and dab with paper towel. If that doesn't correct, work up to stiffer brushes, scrubbing gently.

Wet only the area to be corrected and dab with a paper towel. If that doesn't correct work up to stiffer brushes, scrubbing gently.

Magic eraser – tear off a small piece. Wet then wring out and soak up any excess water with a paper towel. Gently scrub the area until the paint is removed. Be careful not to damage the surface of your paper too much. Rub with the back of a spoon or smooth rock to smooth out any rough paper.



BACKGROUNDS

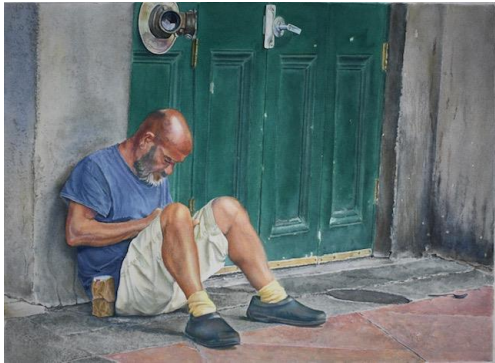
BACKGROUND TYPES



Wash



Combination of Techniques



Surrounding Scene



Loose Splashy

- Washes are a common background, and once mastered, can be beautiful.

- Study different backgrounds on paintings similar to your own.

- Use the same colors as in the subject.

- Plan on whether it would be easiest to do the background first, last, or whether it matters.

- A background of different values can show off the subject. It can get darker around the lighter area of the subject and lighter in value around the darker areas of the subject.

Tracy Herbert